

Wind Financial Terminal - Key Features

The Wind Financial Terminal provides investment professionals with the data and insights they need to understand China's complex capital markets and economy. The terminal integrates the most comprehensive and accurate market data, fundamental data, research, news, and analytics tools across all asset classes in China.

News:

Wind delivers the most updated and comprehensive financial news from more than 20,000 sources daily. The keywords search function can improve your work efficiency. You can customise the securities folder to help you monitor your own portfolio in a timely manner. All news is classified by sectors and markets; besides that, we also classify them into positive and negative news.

The screenshot displays the Wind Financial Terminal interface. The top navigation bar includes categories like 'Me Stock Bond Commodity FX Fund Index News Macro Portfolio Quant Risk Market'. The main content area is divided into several sections:

- Live News:** A list of news items with timestamps and titles. For example, at 19:20, there is a news item about 'Lanzhou Jiaotong Development Construction Group Limited' with a 'Loss' tag.
- TOP News:** A section for top news items.
- Recommend:** A section for recommended news.
- Subscription:** A section for subscription news.
- Market Data:** A section showing market indices and prices, such as 'SSEC: 2954... -25.87 -0.87%' and 'SZSC: 9746... -55.84 -0.57%'.
- Economic Calendar:** A table showing upcoming economic events. For example, on Monday, 10-29-2019, there are events for Japan at 07:50, including 'Core CPI (less fresh food): Ku-...' and 'CPI: Ku-area of Tokyo: MoM(...)'. There is also an event for Australia at 14:45.

Government Regulations:

Laws & Regulations database provides you with around 40 sources, including China Government, ministries and associations.

Wind Financial Terminal. Everest

Me Stock Bond Commodity FX Fund Index News Macro Portfolio Quant Risk Market

0 Global Market Overview 06 Watchlist

Laws & Regulations Violation Cases Regulatory Filings

Service Legal hierar Issuing Dep

public company

- Initial listing
 - The distribution of securities**
 - The distribution of securities information
 - The distribution of securities
 - Review and review after the meeting
 - Underwriting and issued system
 - Securities listed
 - Overseas issued listing
- Information disclosure and suspension
- Standard operation
- Shareholder, actual controller and Dong Jiang
- Periodic reports and equity distribution
- Financing and products
- Compliance transaction
- Acquisitions and changes in equity
- Major assets restructuring
- Stock awards and employee holdings
- Transaction and associated transaction
- Investment relationship management
- Major issues

Date of dispatch	Dispatch department	Title	Legal hierarchy
07-11 08:00	Shanghai Stock Exchange	Shanghai Stock Exchange Hot News on Ju...	
04-27 08:00	China Securities Regulatory C...	On April 27, 2019, the Securities and Futu...	
04-04 08:00	China Securities Regulatory C...	[Administrative License Matters] The issua...	
04-04 08:00	China Securities Regulatory C...	[Administrative License Matters] Issue Sup...	
03-25 08:00	China Securities Regulatory C...	Answers to certain questions in the first b...	
03-25 08:00	China Securities Regulatory C...	Answers to certain questions in the first b...	
03-24 08:00	Shanghai Stock Exchange	SSE STAR Market stock Q&A review questi...	
03-22 08:00	Shanghai Stock Exchange	Shanghai Stock Exchange Respond to the ...	
03-15 08:00	Shanghai Stock Exchange	Sponsors through the SSE STAR Market st...	
03-03 08:00	Shanghai Stock Exchange	SSE STAR Market stock	
03-01 08:00	Shanghai Stock Exchange	SSE STAR Market stock listing committee ...	
03-01 08:00	China Securities Regulatory C...	SSE STAR MARKET initial public offering s...	
03-01 08:00	Shanghai Stock Exchange	SSE STAR Market stock	
01-30 08:00	Shanghai Stock Exchange	SSE STAR Market stock listing committee ...	
01-30 08:00	China Securities Regulatory C...	About the SSE STAR MARKET initial public...	
01-30 08:00	Shanghai Stock Exchange	SSE STAR Market stock	
01-28 08:00	China Securities Regulatory C...	Implementation comments on the establis...	
01-11 08:00	China Securities Regulatory C...	Issues and Regulations on Issuance Super...	
2018-12-19	Shenzhen Stock Exchange	Shenzhen Stock Exchange Listing Commit...	
2018-10-26	People's Republic of China N...	Peoples Republic of China Company Law (...)	

The distribution of securities

PageUp/PageDown to turn pages; Home to Homepage.

SSEC: 2954.... -25.87 -0.87% 195.3 B SZSC: 9746.... -55.84 -0.57% 343.7 B HSI: 26786.... -104.50 -0.39% 78.8 B CSI... 3910.23 -16.36 -0.42% 139.6 B 18:58:28

18:42 Sinosoft Dragon Tiger data (October 29)(Wind) London Copper: 5901.0 -7.00

Research Reports (bonds):

We provide research reports from more than 450 mainland brokers and international investment banks. You can find relevant reports easily using the search and filter function.

Wind Financial Terminal. Everest

Me Stock Bond Commodity FX Fund Index News Macro Portfolio Quant Risk Market

0 Global Market Overview 06 Watchlist

Homepage

All Reports

Morning Briefing

Macro Research

Strategy Research

Industry Research

Company Research

Financial Engineering

Market Overview

Fixed Income

Commodity Futures

Derivatives

Fund Research

FX Market

Other Reports

Ranked by Views

Analyst Rankings

My Reports

All

Here are 200w+ research reports waiting for you

区块链 | 房地产 | 医药 | 汽车 | 5G | 银行 | 科创板专题研究系列 | 特斯拉 | 光伏 | FOF系列

All > Type: Fixed Income Clear Create Subscription Show Filters

Wind has found 5000+ share of relevant research report for you Exclude Articles from WeChat Public Accounts

EBSCN Bond concern information (2019-10-27)	18:41
EBSCN fixed income	
One of the hot convertible bond comparison series of Everbright Securities: CITIC or Pudong developm...	18:41
EBSCN ZhangXu, WuLiang, ShaoChuang, WeiWeiXiao fixed income	
Pacific Securities Pacific fixed income [#] underestimate the value of large denomination do at the end ...	18:23
TaiPingYang Securities ZhangHeSheng fixed income THE PACIFIC	
On debt from the perspective of CITIC Securities	17:23
CITIC Securities Co.,Ltd. MingMing fixed income CITICSBond the study	
How much space is there for CITIC Securities to lower LPR?	17:22
CITIC Securities Co.,Ltd. MingMing fixed income CITICSBond the study	
CITIC Securities - convergable bond weekly 20191028 - starting from the main line of investment	17:22
CITIC Securities Co.,Ltd. MingMing fixed income CITICSBond the study	

SSEC: 2954.... -25.87 -0.87% 195.3 B SZSC: 9746.... -55.84 -0.57% 343.7 B HSI: 26786.... -104.50 -0.39% 78.8 B TW... 11333.... +18.85 +0.17... 145.7 B 19:24:31

19:23 Guangshen Railway (601333.SH) the first three quarters Net income down 9.23 percent to 0.875 billion yuan(g... US Crude Oil: 55.1500 -0.66

Broker bond:

Wind Financial Terminal provides broker bond, CFETS bond, exchange bond and T-bond benchmark quotes for you to find the bonds that you require efficiently.

Wind Financial Terminal..Everest

Me Stock Bond Commodity FX Fund Index News Macro Portfolio Quant Risk Market

0 Global Market Overview 06 Watchlist

Home Bond Market

Broker Bond CFETS Bond Exchange Bond Wind Quote Bond Market Watch T-Bond Benchmark Credit B China Price Monitor TB Futures IRS Money Market

Bond Code or Issuer Name

ALL My Scheme Save My Book New

Valid Sprd ≤ Bid ≤ Ask ≥

Type Rates T-Bond CDB AD BC Muni...
NCD Other
Credit CP SCP MTN ENT.B
FI Bond Corp.B PPN ABS Other

Term <3M 3-6M 6-9M 9-12M 1-3Y
3-5Y 5-7Y 7-10Y ≥10Y

Custom Term ~ OK

Issuer AAA+ AAA AA+ AA Other
Bond AAA AA+ AA AA- Other
Concept IB-Mkt Ex-Mkt Listed N LST Pldg
Rail-B PRN HY Exchan... Overcap.
Nature SOE-C SOE-L POEs Foreign Other
LGFV UIB Industry
Corp.B Corp.B Corp(...) PPN
Enhance Pledged Guarant Unsec.
Clause Perpet... Option- Free
Coupon FIXED SHIBOR DEPO Other
Sectors Mining Steel Metal Material More v

All	PATR	CCBG	CFIC	CCTS													
Maturity	Sec.ID	Name	Bid Amount	Bid	Ask	Ask Amount	CDC	Change (BP)	Source								
9.72Y	155529.SH	CITIC 4.46...	--	--	4.36 *	3000	4.4177	--	PATR								
9.86Y	112966.SZ	GDH 4.4% ...	--	--	4.40	7000+30...	4.4525	--	PATR								
2.22Y	190202.IB	CDB 3.03% ...	5000	3.145 *	3.13 *	5000	3.0735	6.65	CCBG								
9.79Y	155614.SH	CITIC 4.38...	--	--	4.37 *	8500	4.4184	--	PATR								
9.87Y	155681.SH	CTG 4.3% B...	--	--	4.30 *	8000	4.3997	--	PATR								
9.87Y	152271.SH	QLTD 4.46...	--	--	4.40 *	4000	4.5526	--	PATR								
9.88Y	155708.SH	CNBM 4.38...	--	--	4.46 *	3000	4.5092	--	PATR								
9.89Y	112967.SZ	FUJIAN INV...	--	--	4.45 *	8000	4.5029	--	PATR								
9.56Y	190006.IB	MOF 3.29%...	2000	3.295	3.29	3000	3.2875	1.25	CFIC								
9.56Y	190006.IB	MOF 3.29%...	3000	3.31 *	3.2925	2000	3.2875	1.00	CCBG								
9.56Y	190210.IB	CDB 3.6500%...	3775	3.775	3.7503	37503	3.7503	2.72	CFIC								

Details Mkt Quotes Deviation

Maturity	Sec.ID	Name	Price	CDC	Change (BP)	Rating	Source	Time	CP	CVSI
T 9.56Y	190006.IB	MOF 3.29% ...	3.30	3.2875	1.25	--	CFIC	18:22	3.29	
G 9.56Y	190006.IB	MOF 3.29% ...	3.30	3.2875	1.25	--	CFIC	18:22	3.29	
G 9.56Y	190006.IB	MOF 3.29% B290523		3.2875	1.00	--	CCBG	18:17	3.29	
T 9.56Y	190210.IB	CDB 3.6500%...		3.7503	2.72	--	CFIC	17:57	3.65	

SSEC: 2954.... -25.87 -0.87% 195.3 B SZSC: 9746.... -55.84 -0.57% 343.7 B HSI: 26786.... -104.50 -0.39% 78.8 B SME: 6230.93 -39.14 -0.62% 146.0 B 19:37:00

19:36 Xinhua News Agency: block chain concepts touted investment should avoid blindly "follow suit"(Securities Ti... US Crude Oil: 95.1400 -0.67

T-bond futures:

We also provide real-time tracking for data on bond futures.

Wind Financial Terminal..Everest

Me Stock Bond Commodity FX Fund Index News Macro Portfolio Quant Risk Market

0 Global Market Overview 06 Watchlist

Home Bond Derivatives

China T-Bond Futures T-Bond Futures Spre... Std Bond Fwd IRS US T-Bond Futures Monitor Bond Market Overseas Bonds Money Market

Code	Price	Change	% Chg	Buy	Bid	Ask	Sell	Vol	Open Int	OI Change	Settlement	Open	High	Low	FFPs Vol	FFPs OI	Time
^ CFFEX 10-year Treasury Bond Futures																	
T	7.425	0.005	0.01%	24	7.420	97.425	16	2863	88803	+421	97.420	7.450	7.500	7.415	0	0	09:26
T1912	7.425	0.005	0.01%	24	7.420	97.425	16	2863	88803	+421	97.420	7.450	7.500	7.415	0	0	09:26
T2003	7.005	0.015	0.02%	1	7.000	97.010	6	141	9208	+76	97.020	7.035	7.080	7.000	0	0	09:26
T2006	6.700	0.020	0.02%	5	6.670	96.685	5	4	809		96.680	6.720	6.720	6.700	0	0	09:26
^ CFFEX 5-year Treasury Bond Futures																	
TF	9.380	0.015	0.02%	41	9.375	99.380	14	580	36206	-45	99.395	9.385	9.430	9.380	0	0	09:26
TF1912	9.380	0.015	0.02%	41	9.375	99.380	14	580	36206	-45	99.395	9.385	9.430	9.380	0	0	09:26
TF2003	9.105	0.015	0.02%	5	9.080	99.095	16	0	2608		99.090	-	-	-	0	0	09:26
TF2006	8.820	0.000	0.00%	2	8.810	98.830	4	0	350		98.820	-	-	-	0	0	09:26
^ CFFEX 2-year Treasury Bond Futures																	
TS	0.070	0.010	0.01%	669	0.070	00.075	603	1597	13187	-179	00.080	0.075	0.090	0.070	0	0	09:26
TS1912	0.070	0.010	0.01%	669	0.070	00.075	603	1597	13187	-179	00.080	0.075	0.090	0.070	0	0	09:26

Futures Chart CTD Calculation Top Movers

CITICS Treasury Future Index 5Y: 101.20 10Y: 100.31

09:15 09:45 10:15 10:45 11:15 13:30 14:00 14:30 15:00

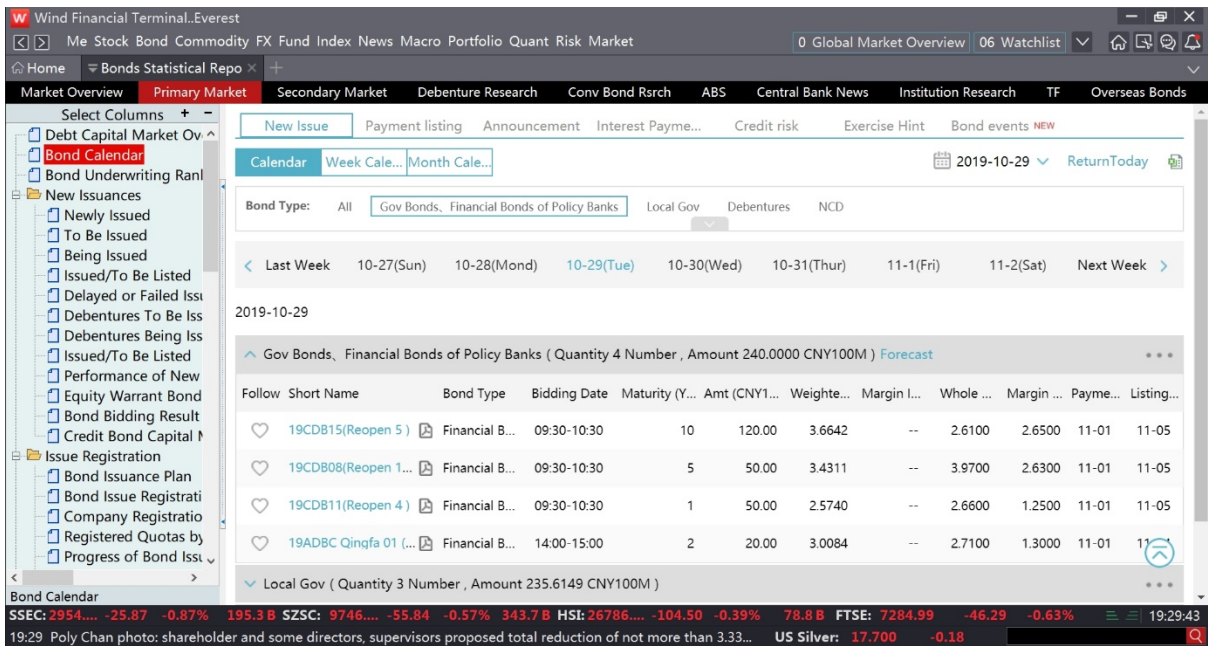
Ask 1 97.425 Close 97.425 Amplitude 0.01%(0.005) Volume 2.86K Turnover 0.00%

SSEC: 2949.... -4.72 -0.16% 2.3 B SZSC: 9707.... -38.85 -0.40% 3.8 B HSI: 0.00 0.00 0.00% 1.7 B TW... 11315.... -18.70 -0.16% 16.3 B 09:26:40

09:26 Guizhou Maotai picture panorama The internet infringement claims 0.01 million yuan 2000 yuan court Panpei... US Silver: 17.790 -0.04

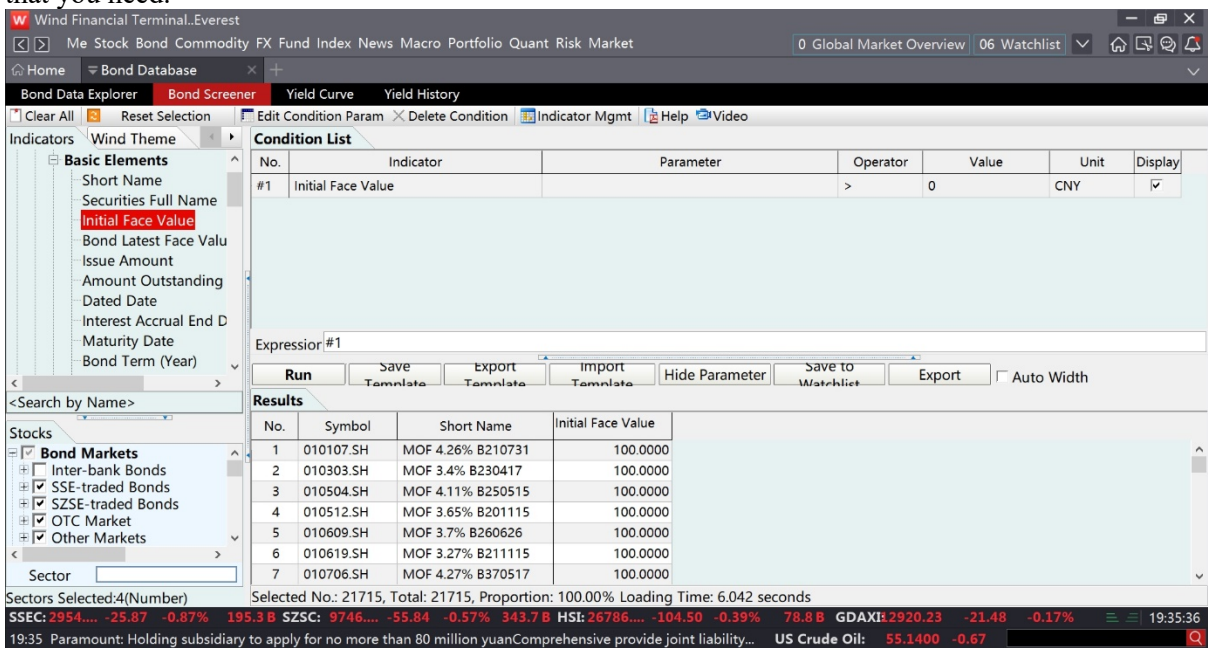
Bond statistical reports:

Wind provide bond statistical reports with market overview, primary market, secondary markets, convertible bond research, etc.



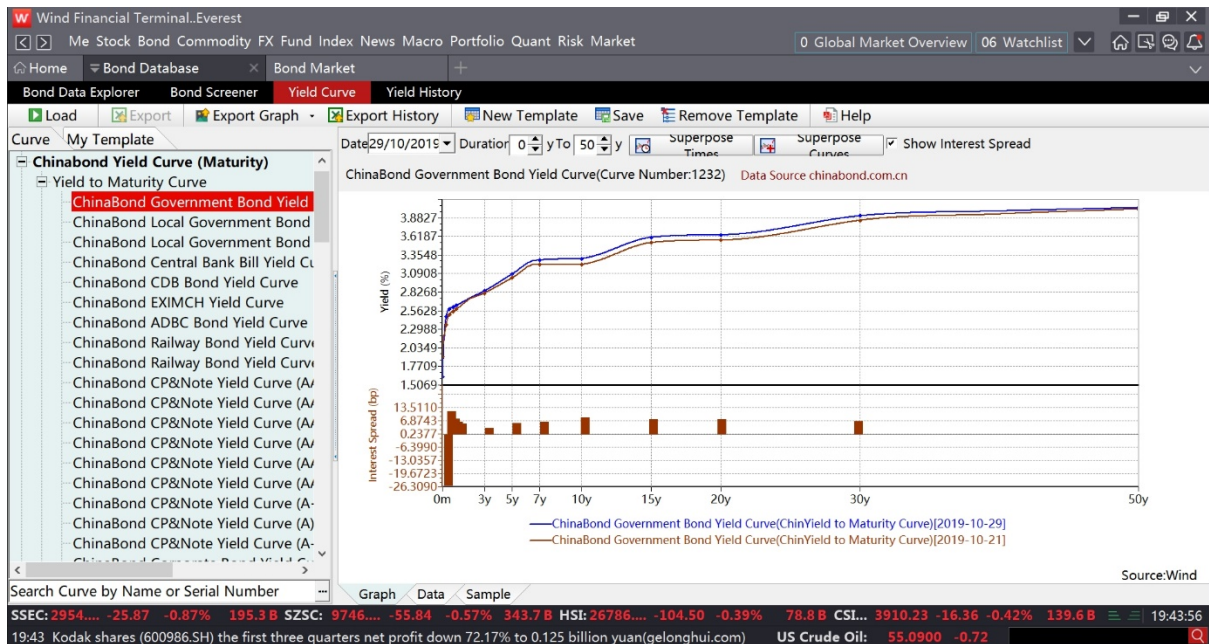
Bond screener:

You can customise your own selection of bonds and data of those bonds by adding in the conditions that you need.



Yield curve:

The bond database also provides data on yield curves, you can customise your search by changing the date, duration, and the sector that the bond is in. You can also create your own template of yield curve by changing the parameters.



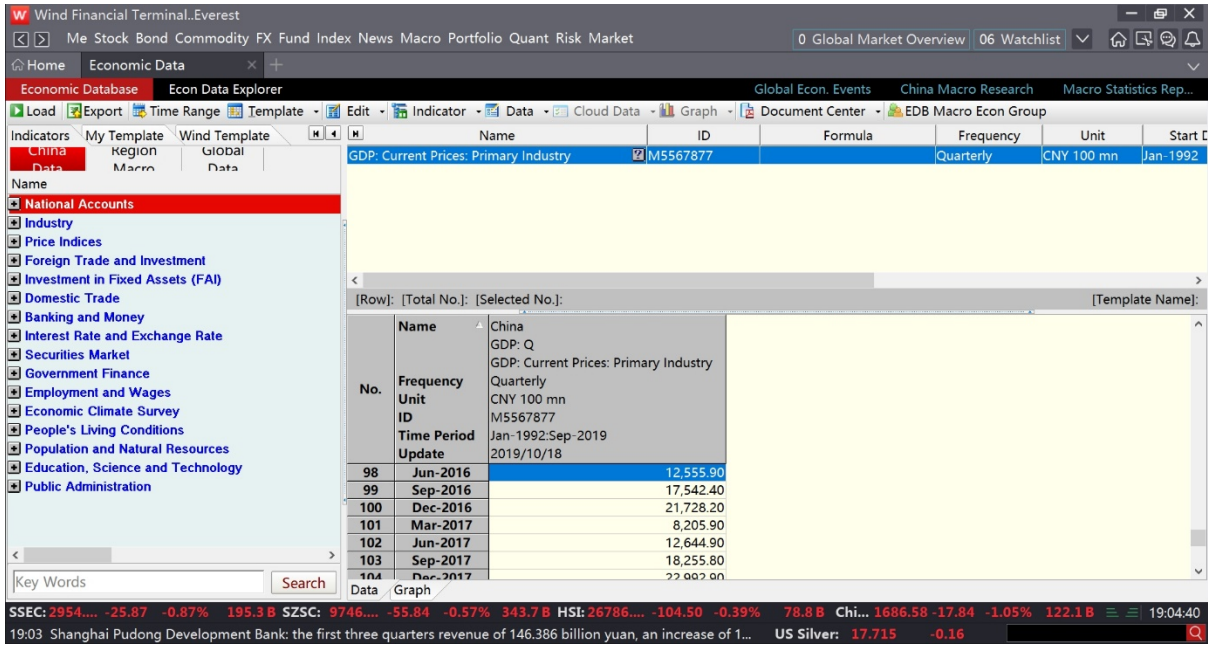
Yield history:

This part provides data on historical values of the yield. We provide data in the FX market, IRS curve, deposit and loan interest rates and other rates. The data loaded can be generated into graphs for you to export into Excel.

Name	ID	Formula	Frequency	Unit	Start Date		
CNY Fixed Rate vs. USD Libor 3M (Bid): 1Y	M1004463		Daily	%	2013/01/2		
[Row]: [Total No.]: [Selected No.]: [Template Name]:							
No.	Name	Frequency	Unit	ID	Time Period	Update	Value
1628	China CNY Fixed Rate vs. USD Libor 3M	Daily	%	M1004463	2013/01/21:2019/10/29	2019/10/29	2.0500
1629	CNY Fixed Rate vs. USD Libor 3M (Bid): 1Y						2.1600
1630	CNY Fixed Rate vs. USD Libor 3M (Bid): 2Y						2.1800
1631	CNY Fixed Rate vs. USD Libor 3M (Bid): 3Y						2.2000
1632	CNY Fixed Rate vs. USD Libor 3M (Bid): 4Y						2.1300
1633	CNY Fixed Rate vs. USD Libor 3M (Bid): 5Y						2.0900
1634	CNY Fixed Rate vs. USD Libor 3M (Ask): 1Y						2.0000

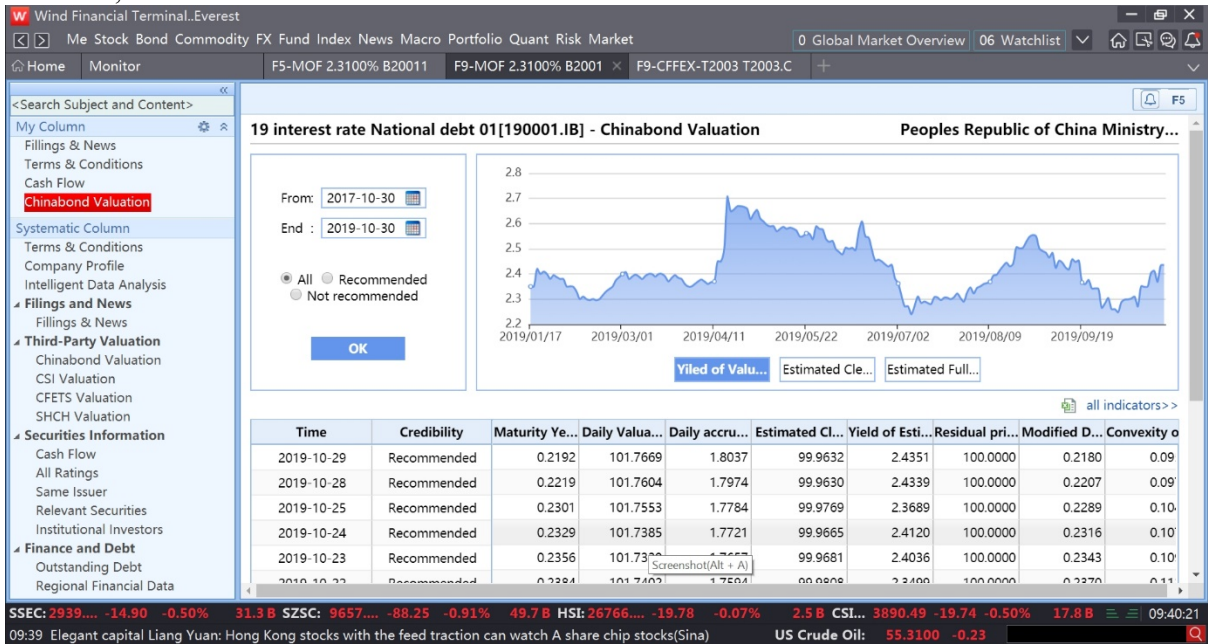
Wind Economic Database: China Macro, China Sector and Global data:

You can find over 3 million indicators in Economic Databases; all important data will be updated within 15 minutes after release. Wind Economic Databases provide detailed macro data of provincial, city and county level, frequencies could be daily, weekly, monthly and yearly. Data Sources includes National and Provincial Bureau of Statistics of China, China Customs, The People's Bank of China, Stock Exchanges, Chinese Ministries, Associations, listed companies, etc.



Bond fundamental data:

Wind Financial Terminal provides comprehensive information about individual bonds such as filings and news, terms and conditions of the bond, securities information, finance and debt, third-party valuation, etc.



Excel add-in:

Wind provide Excel add-in function, all data including Economic data could be downloaded or updated easily on your Excel spreadsheet.

1	Wind						
2	Name	GDP: Current Prices	GDP: Constant Prices	GDP: Constant Prices: YoY	GDP: Current Prices: YTD	GDP: Constant Prices: YTD: YoY	
3	Frequency	Quarterly	Quarterly	Quarterly	Quarterly	Quarterly	
4	Sep-2019	246,865.00	225,740.00	6.00	697,798.00	6.20	
5	Jun-2019	237,500.30	216,685.50	6.20	450,933.20	6.30	
6	Mar-2019	213,432.80	195,422.20	6.40	213,432.80	6.40	
7	Dec-2018	253,598.60	232,264.90	6.40	900,309.50	6.60	
8	Sep-2018	229,495.50	213,043.80	6.50	646,710.90	6.70	
9	Jun-2018	219,295.40	204,077.20	6.70	417,215.40	6.80	
10	Mar-2018	197,920.00	183,613.00	6.80	197,920.00	6.80	
11	Dec-2017	232,349.00	218,393.30	6.70	820,754.30	6.80	
12	Sep-2017	209,824.10	200,133.40	6.70	588,405.30	6.80	
13	Jun-2017	199,177.80	191,284.60	6.80	378,581.10	6.80	
14	Mar-2017	179,403.40	171,852.50	6.80	179,403.40	6.80	
15	Dec-2016	209,877.20	204,764.20	6.80	740,060.80	6.70	
16	Sep-2016	189,337.60	187,498.60	6.70	530,183.60	6.70	
17	Jun-2016	179,878.70	179,089.50	6.70	340,846.00	6.70	
18	Mar-2016	160,967.30	160,837.90	6.70	160,967.30	6.70	
19	Dec-2015	191,720.80	169,488.40	6.80	685,992.90	6.90	
20	Sep-2015	175,803.80	153,127.40	6.90	494,272.10	6.90	

China conference call:

Wind has a mature China conference connect platform, which can connect you to China experts, they share their knowledge and experience everyday, you can join the meetings via Wind Terminal free of charge.

China Conference Call

- Newey shares (603699.SH) 2019 Third Quarter Results Seminar**
10-30(Wed.) 14:00-15:00
董秘
Xia Yuyu Mechanical group
SHENGANG SECURITIES
- Oriental Yuhong (002271.SZ) 2019 Third Quarter Results Seminar**
10-30(Wed.) 15:00-16:00
Zhang Wei Secretary
Zhao Junsheng Building materials ind...
Dongxing Securities
- Kingdomway (002626.SZ) 2019 Third Quarter Results Seminar**
10-30(Wed.) 15:00-16:00
洪彦 董秘
王见鹿 食品饮料行业分析师
毕翊楚 食品饮料行业分析师
CINDA SECURITIES
- Quantification of long-short strategies to hedge stock 3.0era**
10-30(Wed.) 15:00-16:00
陈曦 上海凯纳瑞净资管合伙人
Wan Mine Shanghai University o...
- UFIDA network (600588.SH) 2019 Third Quarter Results Seminar**
- Energy department sh (Screenshots(Alt + A) SH) 2019 Third Quarter Results Seminar**

Ranking

- [Large coffee-core assets classroom]... 2019-10-24
- [Said] Value Investing large coffee and a new... 2019-10-25

Market Data: SSE: 2954... -25.87 -0.87% 195.3 B SZSC: 9746... -55.84 -0.57% 343.7 B HSI: 26786... -104.50 -0.39% 78.8 B SPX: 3039.42 +16.87 +0.56% London Aluminum: 242.0 +5.00

Besides bonds, Wind has comprehensive data coverage on on-shore Fixed Income market, Equities, Commodities, Mutual and Hedge fund data, PE/VC, and 40 million non-listed companies' information.